

Premier-fold

The Premier-fold is the ideal solution where a high density traffic fold door is required. The Premier-Fold allows you to have an automatic door where a swinging door configuration may not be suitable. The door is operated by an Inhead operator via a Standard arm mounted in the top of the door rail. Due to the nature of the building, the Premier-fold is supplied as a complete door set including operators, frame and door leaves.



Key Features

- Standard manual door arm and Pivot (Familiar Preparation)
- Supplied with 100mm x 45mm Aluminium Framework
- Available with fixed Directional Drive or Manual Breakout facility
- Housed In a compact enclosure 165mm x 115mm
- Utilises the trusted EMSW Operator
- Allows connections for all types of safety & activation devices
- Cost effective repairs and replacement components

Options

- Mill finish, SAA or Powdercoated
- Breakout or fixed directional drive
- Single or double configurations
- Longer header sections available for uniforming adjacent screen work
- Euro cylinder in leading mullion
- Bottom rail locks

Automatics

The Premier-fold utilises an electro-hydraulic operator designed for a wide variety of applications. It is suitable for almost all types of external and internal swing doors.

The bonus of utilising the EMSW is that you only need to learn how to install one operator for all your swinging and folding door needs.

The folding door is just as suitable for disabled access, nursing homes and hospital corridors – where the requirements are for flexible operation, reliability and high density traffic conditions.

The operator has been developed to cope with tough conditions. The motor operates quietly and is completely silent during the hold open time. The door can be held permanently open by using a programme selector. The electronics and the motor are discreetly housed in an Inhead enclosure.



Optional breakout facility



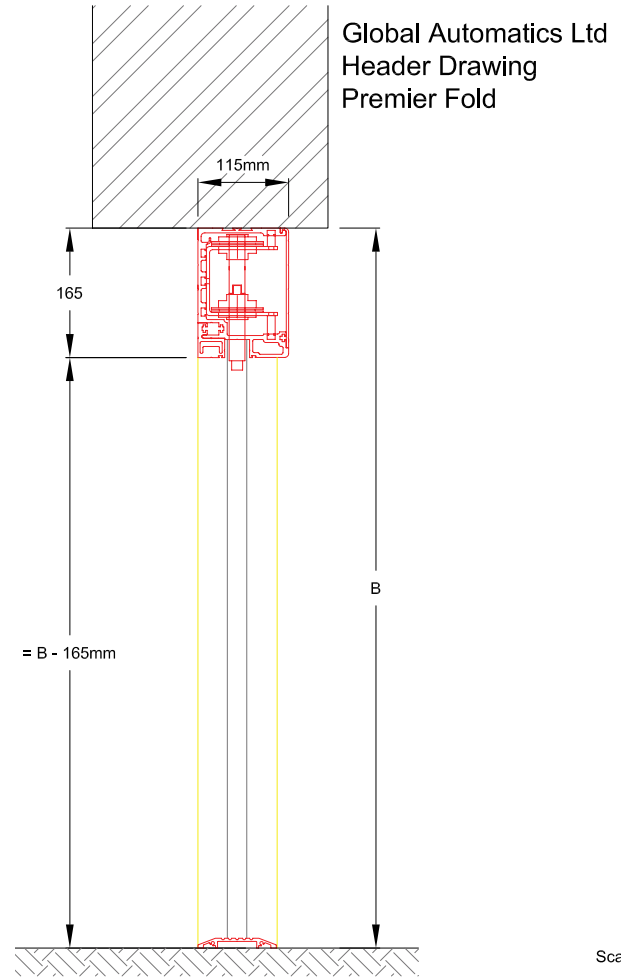
Technical Specification

- Power supply: 230 V AC, 50 Hz
- Weight of operator 11.5kg
- Auxiliary voltage: 13-20 V DC 24 V DC
- Power consumption: max. 230 W
- Ambient temperature: -15° to +50°C
- Recommended max. door weight: 200kg for door leaf width 1600mm

Authority Approval

The EMSW meets requirements for door weights/widths stated in the:

- Controlled door closing, EN 1154 size 3 – 6
- Electrically powered hold open device for swing doors, EN 1155
- Coordination unit for rebated doors, EN 1158
- ANSI/BHMA A156.10, A156.19
- UL325/CUL325
- SITAC 0166/99



Scale 1:10 @ A4

Premier Fold - Elevation

