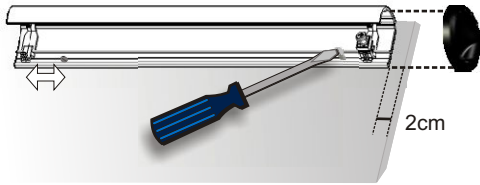


1 MOUNTING THE PROFILE



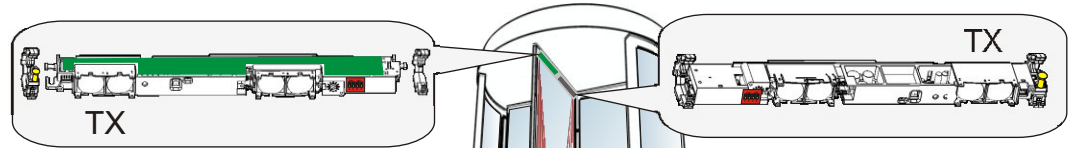
Mount the profiles as close as possible to the leading mullion. Leave 2cm for the black end caps.

Take the future position of the white clips into account before drilling and fastening the screws.



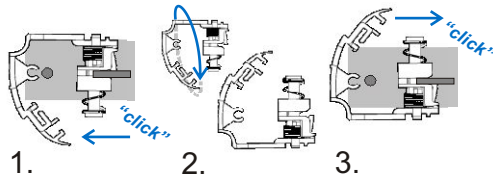
2 POSITIONING THE CARDS

The transmitter (see label) should be placed next to the leading mullion!



If a card needs to be turned:

1. detach white clips
2. turn by 180°
3. reattach



The clip with the screw should be next to the transmitter!



3 WIRING

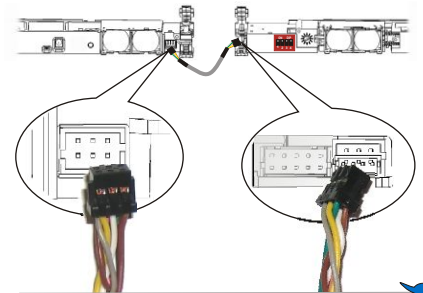
1. TO DOOR CONTROL

⚠ The card connected to the door control becomes the **MASTER**.

	GREEN	POWER
	BROWN	SUPPLY
RELAY 1	YELLOW	COM
	WHITE	NC
	BLACK	NO
RELAY 2	PINK	COM
	VIOLET	NC
	GREY	NO

	NO	NC
NO POWER		
NO DETECTION		
DETECTION		

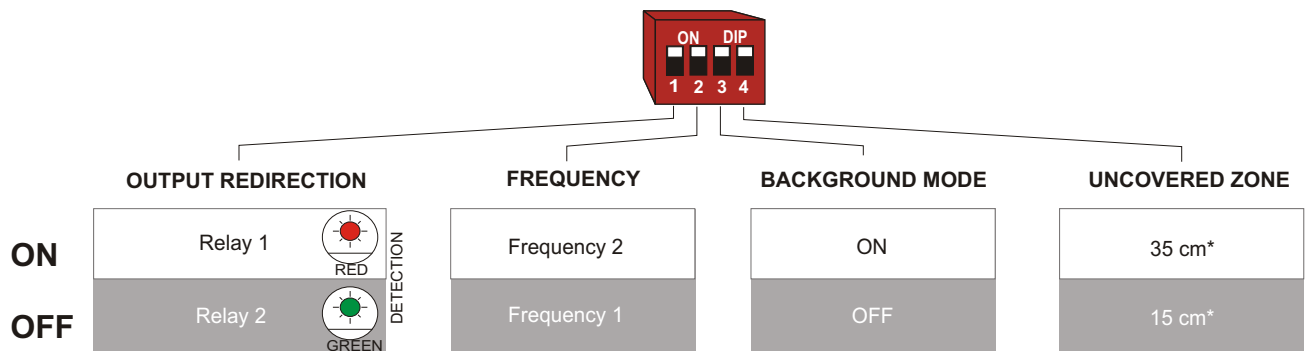
2. BETWEEN CARDS



The connectors can be plugged right or left on the card.



4 SETTINGS



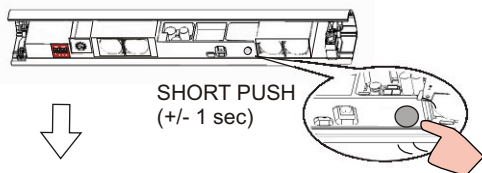
Set different frequencies on cards close to each other.

Difficult background → OFF

*Approximate values for mounting height of 1.8m.

5 SETUP

1. LAUNCH SETUP on master (card connected to door control)



SHORT PUSH
(+/- 1 sec)

A short push on the button of the MASTER launches a setup on all cards.
Do not stand in the detection field!



2. SET DETECTION ZONE on all cards



RED GREEN

LED flashes red/green.

Then one of the following LED-signals tells you what to do:



When the LED goes OFF, the detection zone is OK.

OR

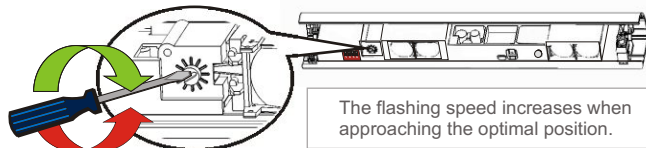
Detection zone is too short: Turn screw clockwise

Detection zone is too long: Turn screw anticlockwise

OR

4x Step out of the detection field. If necessary, switch off background mode (DIP 3 = OFF).

5x Launch new setup. Attention: Do not stand in the detection field!



The flashing speed increases when approaching the optimal position.



6 DOOR SAFETY CHECK

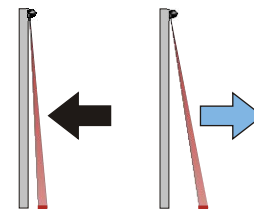
Test if door and sensor function correctly.

If necessary, position spots closer to or away from the door and relaunch a setup.



CLOSER TO DOOR

AWAY FROM DOOR



FIRST AID IN CASE OF FAULTY BEHAVIOUR

Sensor detects for no obvious reason.



Launch setup.
or Check if cards close to each other have different frequencies (DIP 4 = ON).
or Increase dead zone (DIP 4 = ON).
or Switch off background mode (DIP 3 = OFF).

Red or green LED is ON permanently.



Launch setup.
or Switch off background mode (DIP 3 = OFF).

Orange LED flashes quickly.



Cut and restore power supply.
Sensor displays one of the following signals:



1x

Orange LED flashes 1x every 3 seconds.



Cut and restore power supply.
If orange LED flashes again, exchange sensor.



2x

Orange LED flashes 2x every 3 seconds.



Power supply is unstable, check power.
If orange LED flashes again after restoring power supply, exchange sensor.



3x

Orange LED flashes 3x every 3 seconds.



Check wiring or launch a card count: long push on button of MASTER until green LED indicates the number of cards.



4x

Orange LED flashes 4x every 3 seconds.



Step out of the detection field.
or Switch off background mode (DIP 3 = OFF).



5x

Orange LED flashes 5x every 3 seconds.



Start a new setup.
Attention: Do not stand in the detection field!

TECHNICAL SPECIFICATIONS

Technology: active infrared with background suppression
Detection field: 400mm (W) x 70mm (D) (4 spots at 2m mounting height)
Mounting height: 1.1m to 3m
Reaction time: 32ms to 128ms (depending on immunity)
Supply voltage: 12V - 24V AC -5%/+10% ; 12V - 30V DC -5%/+10%
Max current consumption: 120mA @ 24V AC / 65mA @ 24V DC (MASTER)
 80mA @ 24V AC / 65mA @ 24V DC (other cards)
Output: 2 relays (free of potential contact)
 Max. contact voltage 42V AC/DC
 Max. contact current 1A (resistive)
 Max. switching power 30W (DC) / 60VA (AC)

Max. presence detection time: 1 minute
Max. number of cards: 4 (up to 6 if 24V DC)
Reflectivity: min 5% at IR-wavelength of 850nm
Degree of protection: IP53
Temperature range: -25°C to +55°C; 0-95% relative humidity, non condensing

This installation guide is a summary of the user's guide, which can be downloaded on our website: www.bea.be



If you are interested in product trainings or require further documentation or information, please do not hesitate to contact us.