

TORMAX TEP

RETRO-FIT GUIDE

For the
Premier-Slide 100

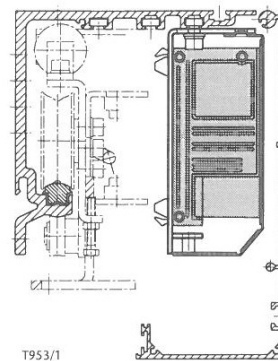


Installation of Equipment

Identification of Integral Parts

TEP, TLP, TEP PICDOR

- Install the battery module BAT.51K with the mounting parts provided in the outermost keyway of the header profile.



This Guide has been put together to aid you in Retro-fitting an automatic sliding door system.

This retrofit kit has been designed to replace the Motor and Control mechanisms whilst re-using all the mechanical components such as wheels and track.

Please check your sensors etc for compatibility.

For example some manufactures use their own photocells or 3-wire sensors that cannot be used with the Premier-slide Retrofit Kit

Please refer to the Enclosed Installation manual for wiring of the Premier-slide retrofit kit and Technical help.

Retrofit Adaptation Kit

Approx Fixing Time : 2 hrs

Before commencing with the installation, please ensure you have the correct kit for the operator make / model required.

Isolate main voltage and unwire connections to operator.

- **Before beginning, ensure you mark the position of the centre of the motor pulley and idler pulley in relation to the centre of the operator / track, before removing them.**

- **Strip out the old motor / gearbox & control/ power unit etc.**

We recommend that the track is cleaned and checked. We also recommend that the existing load wheels / nylon track insert are checked and replaced if needed.

It is recommended that the doors are adjusted and aligned before any equipment is installed.

Remember: A badly running manual door = A badly running auto door !!

- **Commence installation by installing the motor and universal Mounting bracket to the L/H side of the track system (ensuring that the motor pulley wheel is in the same position as the old unit).**
- **Install new universal idler pulley wheel assembly (ensuring that the motor pulley wheel is in the same position as the old unit).**

The location of the centre of the pulley will be the marking placed prior to removal of old equipment.

- **Install 2 x new Belt Clamps to allow fitting of the new belt (Different pitch from original)**
- **Install new narrow drive belt to existing belt brackets and adjust belt tension.**
- **Install new control unit to the right hand side of the motor within distance of motor wiring loom and connect motor to the left hand side socket connector.**
- **Check all wiring for correct routing and secure with cable ties where ness.**
- **Install the New Access/Mode Switch in the required place and plug in.**

Your door system is now ready to wire up any sensor / Auxiliary Items to. Please reference the Installation Manual enclosed with this guide.