

DOM ASTROSLIDE

RETRO-FIT GUIDE

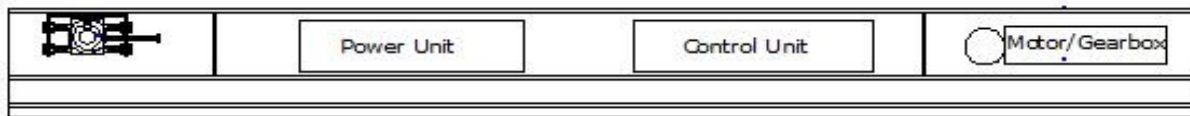
For the
Premier-Slide 100



Installation of Equipment

Identification of Integral Parts ([Dor-O-Matic - Astroslide](#)) :

Fig : 1



Location Of Premier-Slide Integral Parts when installed in ([Dor-O-Matic - Astroslide](#)) :

Fig : 2



Retrofit Adaptation Kit For: (Dor-O-Matic - Astroslide)

Approx Fixing Time: 3 hrs

Before commencing with the installation, please ensure you have the correct kit for the operator make / model required.

Conversion of the Dor-O-Matic - Astroslide (old type) operator requires the re-location of the motor / idler pulley assembly to the opposite sides of the operator, as opposed to where they are fitted from the manufacturer (see Fig 1 &2).

**An additional replacement motor bracket and new narrow width drive belt is supplied which is compatible with the existing belt bracket fixing system.
the kit will also be supplied with some captive nuts & new bolts.**

Existing fixings are imperial sizes and the new fixings will be supplied as metric.

Isolate main voltage and unwire connections to operator.

- Before beginning, mark the position of the centre of the motor pulley and idler pulley using a pencil on the operator track and the centre of the operator, before removing them.
- Strip out all old parts including the 2 x cast aluminum motor mounting lugs. (see fig 1,) and wiring.
- Retain the idler pulley assembly for re-use, Discard all other parts.
- We recommend that the track is cleaned and checked. We also recommend that the existing load wheels / track are checked and replaced if needed.
- It is recommended that the doors are adjusted and aligned before any equipment is installed.

Remember: A badly running manual door = a badly running auto door !!

- Commence installation by installing the special angled motor bracket / motor to the L/H side of the track system, ensuring that the motor pulley wheel is in the same position as the old idler pulley wheel & the back of the motor facing outwards

(Plastic Encoder cover facing towards endplates).

- Install by inserting 2 x M6 captive nuts into the top channel section and secure motor.

The location of the centre of the pulley will be the marking placed prior to removal of old idler pulley.

- The idler pulley assembly is to be re-fitted to the R/H side of the operator, but needs to be reversed. The pulley wheel should be removed from its shaft after removing the retaining circlip (see fig 3).

The pulley shaft can be unscrewed (see fig 4). and then re-fitted to the opposite side of the pulley mounting block, after installing the spacer supplied by sliding over the threaded area (see fig 5). Refit the pulley wheel to the pullet shaft (see fig 6) and retain using original circlip.

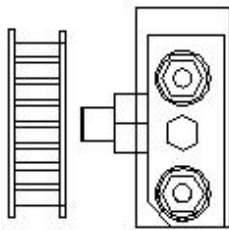


Fig : 3

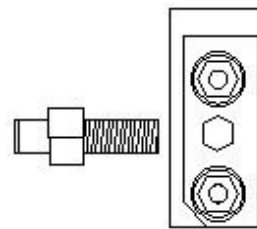


Fig : 4

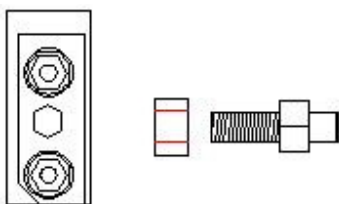


Fig : 5

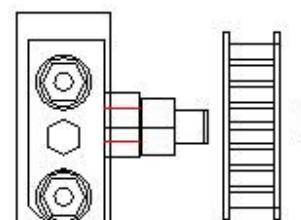


Fig : 6

- The complete idler pulley assembly can now be re-installed into the header unit using the 2 x new, captive nuts (insert into top channel as per motor instructions), 2 x M6 bolts & washers supplied.

- **Install new narrow drive belt to existing belt brackets and adjust belt tension.**
- **Install the new control behind the drive belt, to the right hand side of the motor within distance of motor wiring loom and connect motor to the left hand side socket connector.**
- **Check all wiring for correct routing and secure with cable ties where ness.**
- **Check and tighten all fixings.**
- **Install the New Access/Mode Switch in the required place and plug in.**

Your door system is now ready to wire up any sensor / Auxiliary Items to. Please reference the Installation Manual enclosed with this guide.